

High added value technology such as wood & concrete & bricks by liquid glass

- 1) The liquid glass material is not petroleum but quartz
- 2) It is possible to color.
- 3) Excellent environment, responsible for decarbonisation

Construction Before use



After construction use



It is liquid petroleum instead of petroleum, quartz as raw material. Technology development to modify inorganic materials to create new value added

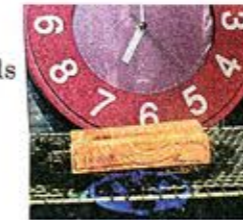
Prevent global warming and contribute to the revitalization of the world

Wood with liquid glass. Modification of concrete, brick, etc.

Timber reinforced by liquid glass technology, which does not use medicine, exerts unprecedented strength by acquiring the characteristics of inorganic while maintaining original function of tree. It does not adversely affect the human body and the environment, and the performance lasts for a long time.

**Fire Retardant**

Ignition immediately afterwards



In 15 minutes

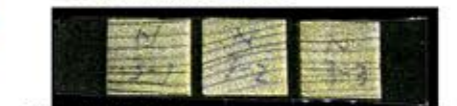


By filling wood with vitreous material Wood itself will not burn easily.

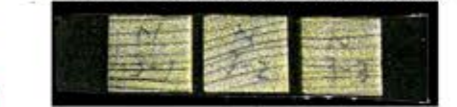
**Antiseptic**

**/ Anti-termite**

Silicone resin injection treatment + 1 tree paint finish



Yesolidi: With weathering operation

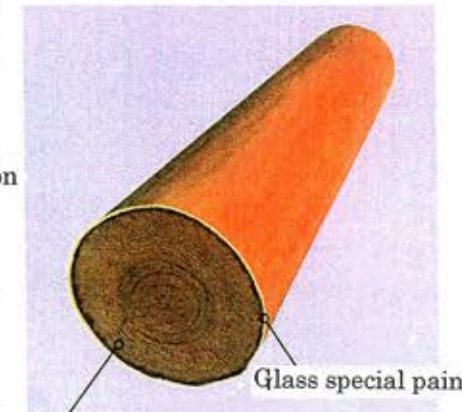


Yellow flood control: no weathering operation  
No treatment: yesiro ali



Since it prevents water invasion, it prevents dew condensation and suppresses the development of rot fungus. Also, vitreous challenges white ants.

**Discoloration prevention**



Glass injection process

Colloidal glass penetrated into the cell wall of wood, It solidifies and reinforces the cell wall. Prevent water penetration. It also improves paintability.



Wood use even in places where flameproof standards are required. It becomes possible, and the range of utilization widens.



The reformed wood does not fade or discolor under harsh environments due to direct sunlight or atmospheric exposure such as urban areas.



Although 9 years have passed since construction, faded faces can not be seen on the sign face. The black frame is treated with AAC and wood preservatives.

Use properly according to the purpose.

### Tackle A/Tackle B

Porous detergent for wood composed only of safe inorganic components. There is no toxicity and consideration is given to plants. Specific chemical substances, toxic substances handling methods, ingredients related to PRTR law are not included and the water pollution control law is also cleared. Safe removal of dirt without burdening the environment and objects. A surprising technology that can easily return deteriorated wood to white wood. It can also be applied to tiles, bricks, etc. Ideal for sites requiring safety.



Wooden benches inside the park that have been deteriorated by sunshine and wind and rain can be cleaned without major curing work. The beauty of the tree quickly revives.

### Wood Lsceru

Flameproof ceramic paint which forms calcium silicate which is particularly effective for repairing Sasakure · Sauce. Aqueous basecoat and topcoat 2 liquid type. The base primer reacts with the topcoat to form a ceramic called calcium layer silicate. It also prevents discoloration and realizes free maintenance.



長野県・中部森林管理署表草峠東屋



鹿児島県・奄美和光園

A wood surface composed of a strong ceramic layer keeps beauty for a long time. We will also steadily prevent the occurrence of Sasakure · Thorn.

### Thee Age/Wood Rescue

Apply vitreous composite paint to wood modified on wood ditch. Enhance the hardness by completely protecting the surface layer with glassy material without impairing the breathability of wood. It ensures breathability and prevents water from passing, but prevents peeling and blistering as water vapor and air pass through the coating film. New generation wood paint devised in design different from penetration type paint and film coating paint.



神奈川県・横浜港大さん橋



東京都・池上本門寺南之院山門

Glassy ingredients restore the dangerous degradation surface which impairs the texture and stands up. It is also very excellent for slip prevention effect.

## Types of liquid glass products

### Crystal Stone

Concrete permeability modifier. Solventless and completely inorganic components. Alkaline aqueous solution whose main component is silica penetrates and diffuses on the surface of concrete, mortar and others. The surface of the base material is filled with high hardness glass material by ion substitution reaction. It is excellent in long-term weather resistance, water resistance, chemical resistance, nonflammability and reduces maintenance.



愛知県・春日井市松本跨道橋



Reformed layer prevents invasion of water, carbon dioxide gas, oxidizing gas, etc., which are factors of neutralization of concrete, and strengthens it. It also improves oil resistance and maintenance.

### Terios Court

Permeability modifier without solvent / completely inorganic substance. An alcohol-based liquid agent containing silica as a main component causes hydrolysis / dealcoholation reaction with moisture in the air to form a high hardness holographic film. By using exclusive primer, it corresponds to various base materials such as metal, tile, stone and wood. Ideal for tiles / stone dirt, deterioration, graffiti protection, protective coatings. Also effective for preventing Escherichia coli, Staphylococcus aureus, mold, moss and others.



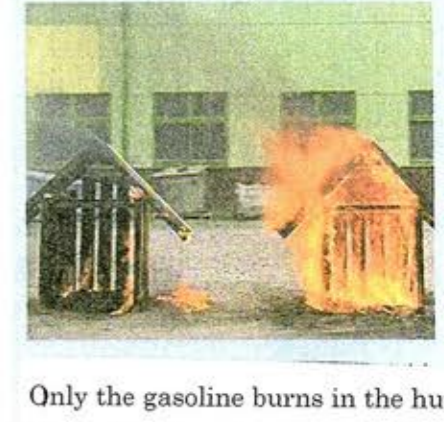
京都府・キリンビール跡地



In addition to excellent corrosion protection function, the modified surface layer protects concrete, iron, stone etc from graffiti etc. Maintain aesthetic look with simple cleaning.

### Fire Cut

A colorless transparent, non-polluting solvent mainly consisting of completely inorganic components. No special treatment or preparation is necessary. Easy to construct with spraying, Brush painting etc., the effect is sustained. Excellent cost performance. It corresponds to various materials and applications from wood to clothing. Also flammable natural materials will prevent flashover and prevent spreading fire. Prevent alteration / discoloration of target substances.



Only the gasoline burns in the hut (fire left) where fire cut is applied to prevent ignition and spreading fire. The original grain revives with paper file.



Asakusa Temple / West entrance renewal

"Specification" "Main pavement part" Liquid glass processed hinoki material



## Liquid Glass

Liquid glass improves adhesion to organic matter by improving fine particle silicate composition liquid. It is a completely new material with excellent coloring property, elasticity, flexibility, less environmental burden. "Liquid glass" is a technology that possesses the possibility of using wood in new areas that have never existed, including landscape, infrastructure, and architecture.

### Glass Type

Wood interior penetration treatment



東京都・私鉄駅コンコース

### Ceramic Type

Wood surface reforming processing



東京都・六本木商業施設

"JTree Aji" which can be used in combination with nano-sized inorganic pigment



福島県・じょもびあ富増 体験学習施設

木目の美しさを維持する木材内部浸透型の染木型塗料として

"Terios Court" which can give beautiful gloss and gloss to the surface



九州旅客列車車両内部

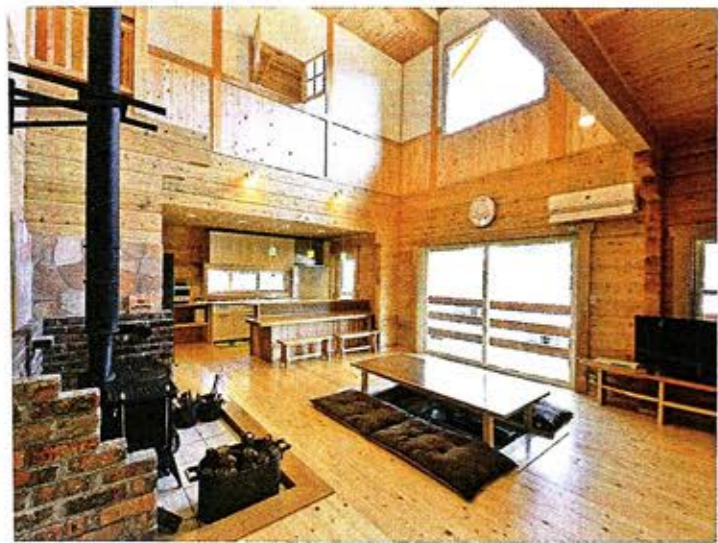
ガラス質が基材に強固に密着し、長期にわたって効果を発揮する表面保護剤として

"Crystal Stone" for Concrete

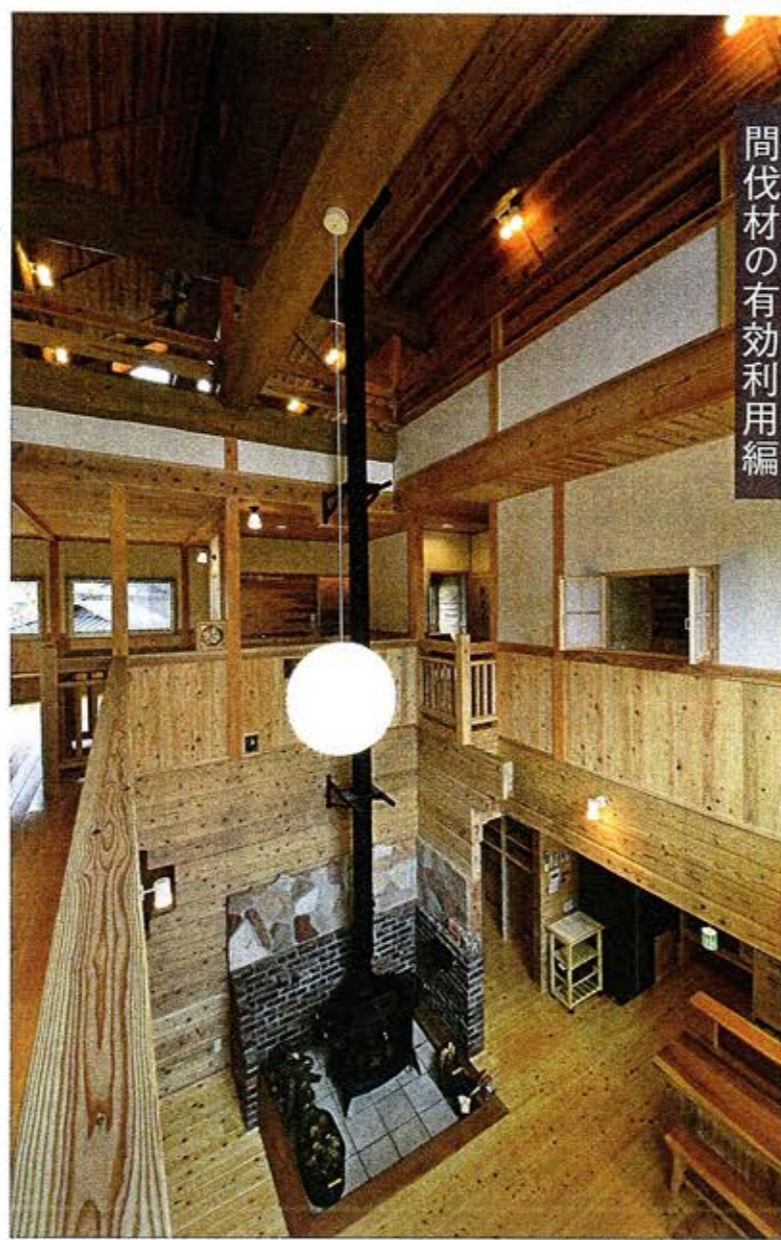


東京都・お台場 自由の女神

日本の建築・土木・景観、ありとあらゆるものを長期耐久化!



フローリング (テリオスコートNP360G)

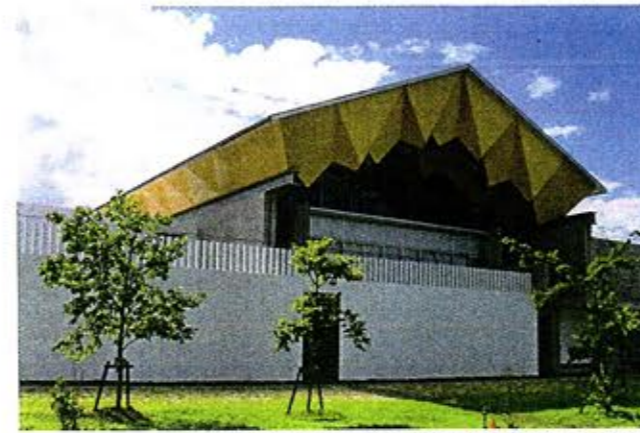


上3点写真=中山ノリ



外壁面 (木あじ、テリオスウッド)

Build log houses using cedar thinned wood. Such a house builder is in Kumamoto prefecture of Japan. The log house of the above picture was made with a beautiful western style finish using the Japanese cedar wood of domestically-grown thinned timber by using "Tree Aji + Terios Wood" for the exterior part and thin coloration. By using a clear glass coating agent "Terios Court", the interior complements the softness and elegance of cedar. Liquid glass can be finished in color as well as clear finish. Cedar wood has good coloring properties and it has a beautiful finish.



福島市宮畑遺跡史跡公園 体験学習施設 (合板+つき板)



東京都世田谷区個人宅ルーバー・デッキ (ヒノキ)



北海道美唄町木製階段 (カラマツ)



千葉県千葉市個人宅外壁・支柱他 (ヒバ他)



東京都私鉄駅コンコース (スギ、ヒノキ)



東京都新宿区市ヶ谷加賀個人宅CLT外壁 (ヒノキ)



社会福祉法人 新栄会 新栄保育園ルーバー (スギ材) (写真=牛尾幹太)



JR 東日本小淵沢駅舎 内装制限部分塗装 (不燃木材白華防止)



数々の賞を受賞 (靱馬工務店提供)



福島県郡山市藤田建設工業郡山営業所 (スギ)



大阪府東大阪市石切神社参道 (近鉄石切駅近く) (ヒノキ)

## T&C Anticorrosion - For salt damage -

### Concrete salt deterioration surface impregnation method

T & C anticorrosion - for salt damage - is a technique that effectively suppresses penetration of deterioration factors by applying two types of impregnating materials to the concrete surface, and in particular, drastically enhances salt damage resistance. We also improved the ease of construction in the marine environment.

**NETIS** Registration number  
HKK-110001-V

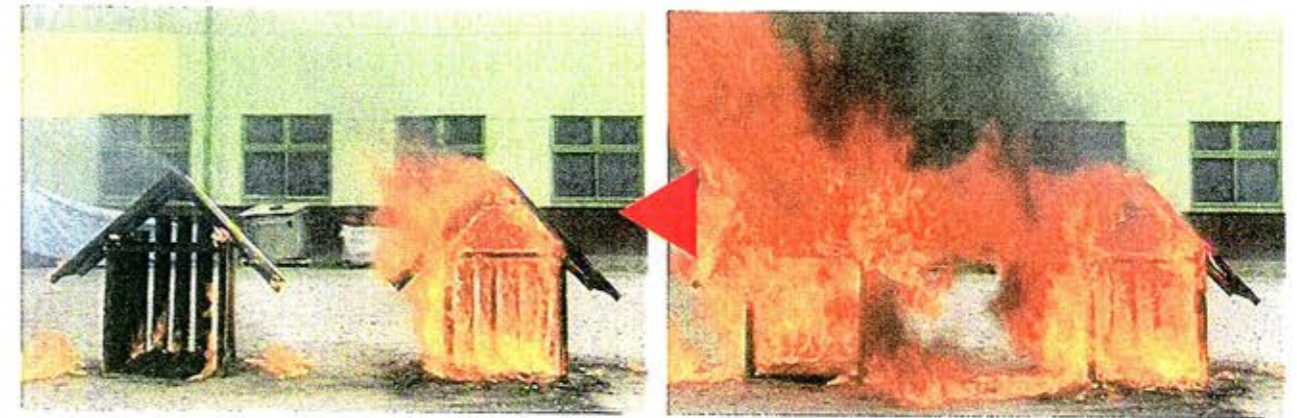


## Super glass paint (The liquid glass)

### “SHIODA”

1. The liquid glass material is not petroleum but quartz
2. It is possible to color
3. Excellent environment.responsible for decarbonisation

#### Fire cut



Only gasoline burns, preventing ignition and spreading fire.  
Original wood grain with paper file.

#### J-JOBS CO.Ltd

9F Keiwa Odori Building 50,14 - 2 Odori Nishi 1 Cho-me,  
Chou-ku Sapporo,Hokkaido 060-0042 Japan  
Phone +81(0)11 218 6000  
Fax +81(0)11 252 9657

**J-JOBS**